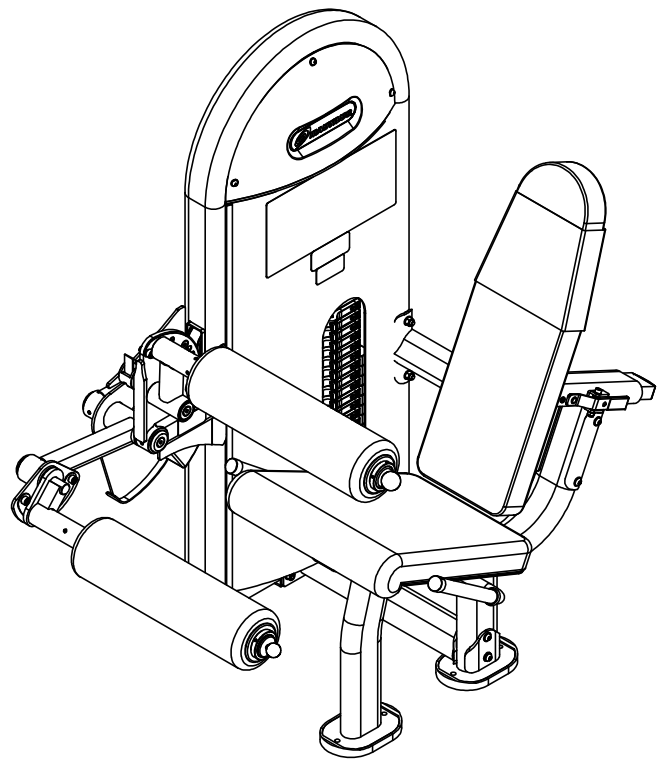
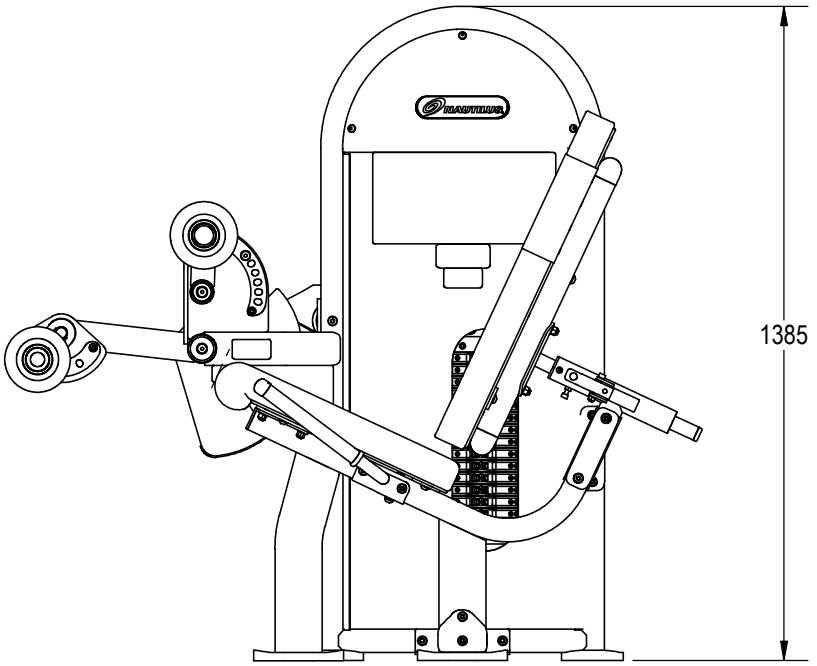
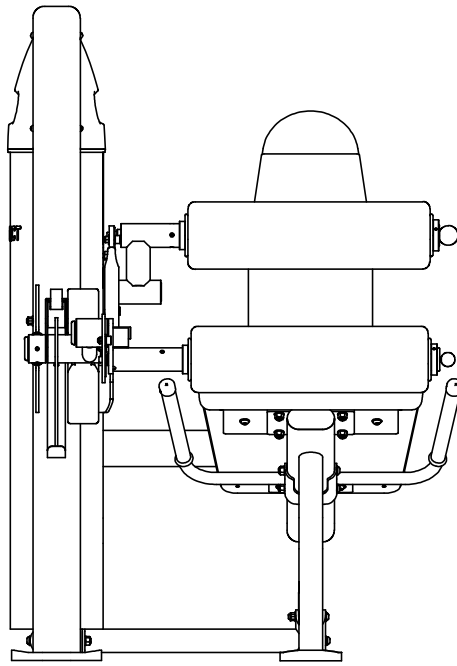
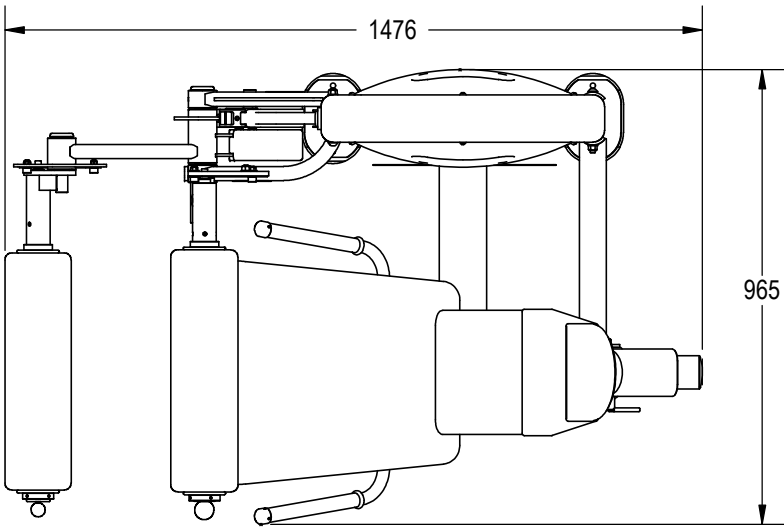


- NOTES:
1. ASSEMBLE AND INSPECT PER SOP 620-7918..
 2. INSTALL Kg STICKER AND AFFIX Lb STICKER TO INSIDE OF SHROUD WITH TAPE.
 3. COLOR DICTATED BY THE SALES ORDER. REFERENCE THE MACHINES BOM FOR COMPONENTS CONTAINING -XX, -00XX AND -XXXX.
 - a. COLOR: -XX COLOR DESIGNATOR AS SPECIFIED IN SOP 620-8222.
 - b. THE -XX CAN RESULT IN ONE COLOR FOR THE METAL SHROUD AND A DIFFERENT COLOR FOR THE METAL FRAME ALSO WITH A -XX LISTED ON THE BOM.
 - c. THE -00XX IS THE COLOR DESIGNATOR FOR UPHOLSTERY.
 - d. THE 5TH DESIGNATOR: "X" WITHIN -XXXXX DEFINES THE HEAD STRAP OR CUSTOM PRODUCTS BRAND. THIS IS SPECIFIED ON SALES ORDERS.
 - e. THE -XXXXX IS CREATED BY COMBINING THE -XX, -00XX AND THE 5TH DESIGNATOR.
 - f. ALL X'S SHOULD BE DEFINED ON THE SALES ORDER.

REVISIONS HISTORY				
REV.	DATE	DESCRIPTION	ECO	BY
A	8/2/2016	INITIAL RELEASE	15475	



DOCUMENT STATUS:

NOTICE OF PROPRIETARY INFORMATION
THIS DOCUMENT SHALL NOT BE REPRODUCED NOR SHALL THE INFORMATION CONTAINED HEREIN BE USED BY OR DISCLOSED TO OTHER EXCEPT AS EXPRESSLY AUTHORIZED BY CORE HEALTH & FITNESS, LLC.

CLASS OF WORK	UNLESS OTHERWISE SPECIFIED DIMS ARE IN mm. TOLERANCES FOR MEASURE OF LENGTH ARE:							ANGLES = ±2°		
	0.5 to 3	> 3 to 6	> 6 to 30	> 30 to 120	> 120 to 400	> 400 to 1000	> 1000 to 2000	> 2000		
FINE	±0.05	±0.05	±0.1	±0.15	±0.2	±0.3	±0.5	----		
MEDIUM X	±0.1	±0.1	±0.2	±0.3	±0.5	±0.8	±1.2	±2		
COARSE	±0.2	±0.3	±0.5	±0.8	±1.2	±2	±3	±4		
VERY COARSE	----	±0.5	±1	±1.5	±2.5	±4	±6	±8		

MATERIAL
SEE BOM

FINISH
SEE NOTES

VENDOR: _____ P/N: _____

THIRD ANGLE PROJECTION		
DRAWN	INITIAL AM	DATE 8/2/16
CHECKED		
APPROVED		
	U.O.M.	MM

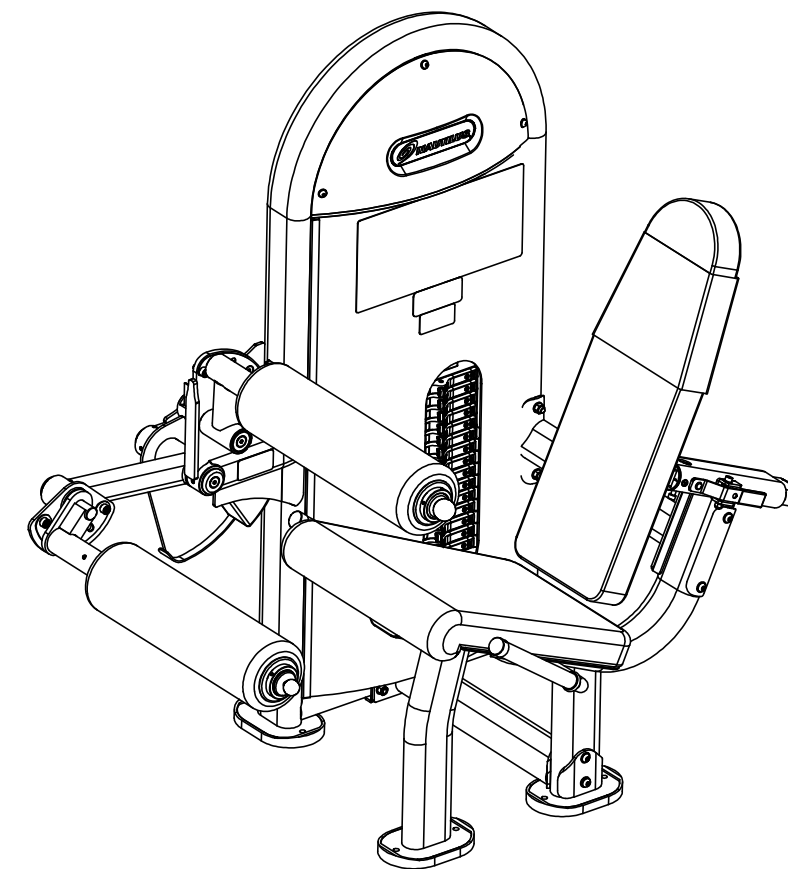
CORE HEALTH & FITNESS, LLC
4400 NE 77th Ave., Suite 300
Vancouver, WA 98662

CORE PART NO: **NL-S1011-29AGS** REV: **A**

TITLE: **NL,SSS,LEG CURL,SEATED,LNL**

SCALE: 1:16 SHEET 1 OF 3 SHEET SIZE: B

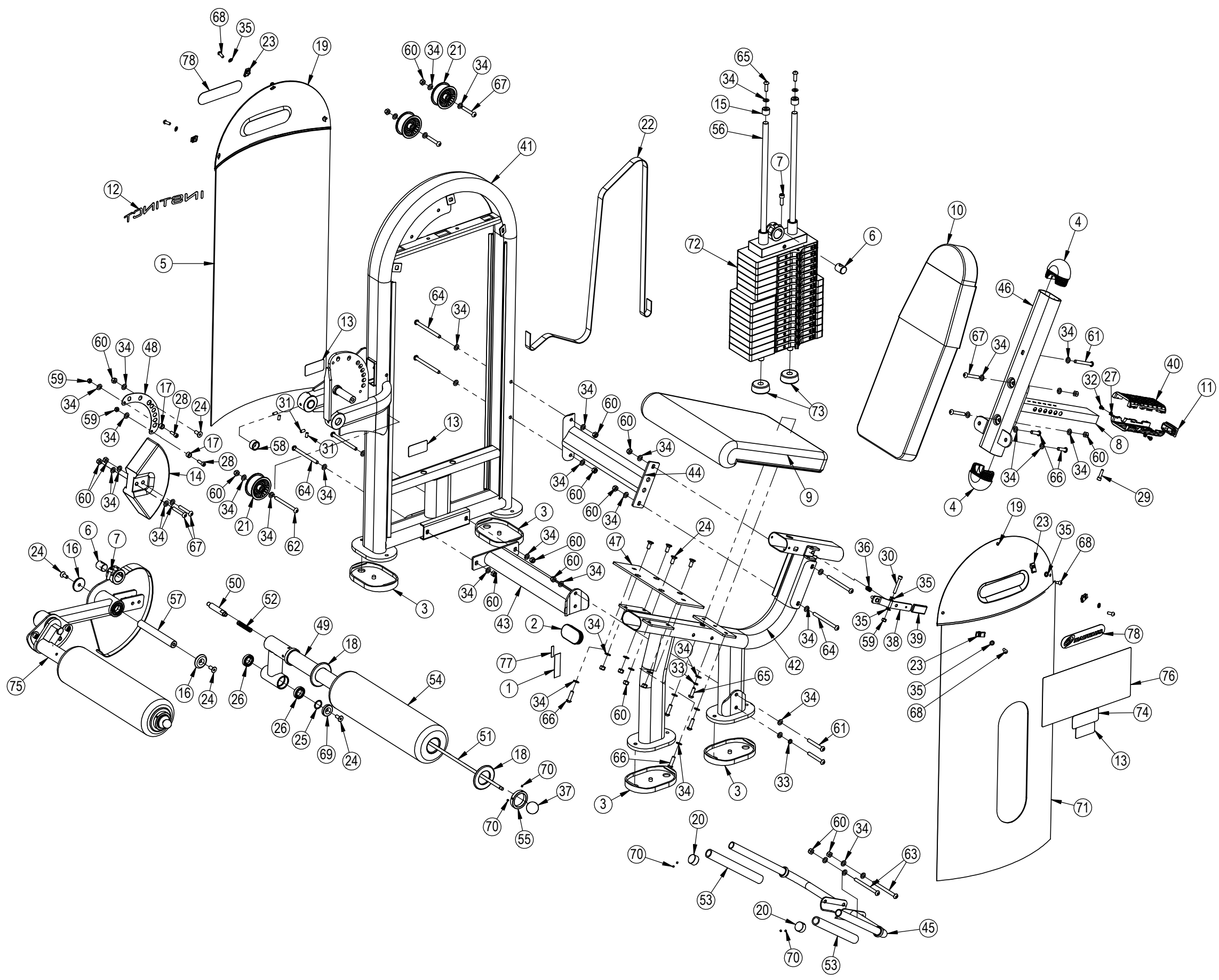
9	8		7	6	5		4	3	2	1
J	ITEM NO.	PART NUMBER	DESCRIPTION	Q'TY.	ITEM NO.	PART NUMBER	DESCRIPTION	Q'TY.	J	
	1	050-5457	Label, S/N, Non-Powered, Primary, Core H&F	1	45	730-1044	ASSY,SEAT,HANDLE,FRAME	1	J	
	2	730-0199	CAP,FLAT,ELLIPSE TUBE,100X50	1	46	730-1045	UPHOLSTERY,BACK,PAD,BRACKET	1		
	3	730-0216	PAD, FEET, BASE, IN-B7503	4	47	730-1046	PLATE,SEAT,PAD,SUPPORT	1		
	4	730-0223	CAP,LARGE,FRAME	2	48	730-1047	STOPPER,ROM,PLATE	1		
I	5	730-0233	SHROUD,REAR,WGT STK,LP	1	49	730-1050	ASSY,PIVOT,KNEE,BAR	1	I	
	6	730-0236	SHAFT,COMPRESS BELT,DIA 27,LEG 33	2	50	730-1051	ADJUSTMENT KNOB,LOCK,PIN	1		
	7	730-0237	SCREW,M10X1.5,30MM,SHC,HE,SS	2	51	730-1052	ELONGATE,ADJUSTMENT KNOB,SHAFT	1		
	8	730-0244	WELDMENT,SEAT POST	1	52	730-1053	ADJUSTMENT,KNOB,SPING	1		
	9	730-0245	PAD,SEAT,IN-S1011	1	53	730-1054	FRAME,SEAT,HANDLE,PVC,SLEEVE,GRIP	2		
H	10	730-0246	PAD,BACK REST,IN-S2100	1	54	730-1055	PAD, KNEE, IN-S1011	1	H	
	11	730-0247	CAP,ROUND,SQUARE TUBE	1	55	730-1057	LOCKING RING,50MM ID,66MM OD	1		
	12	730-0384	LOGO,INSTINCT	1	56	730-1078	GUIDE RODE,Ø19MMX935MM	2		
	13	730-0385	STICKER,CAUTION,PINCH POINT	3	57	730-1084	SHAFT, DIA 25MM X 192MM	1		
	14	730-0548	BLOCK,COUNTERBALANCE,IN-S5110	1	58	730-1087	SPACER,DIA 32MM,HEIGHT 16MM	1		
G	15	730-0565	CAP,RUBBER,ROD GUIDE WT STK	2	59	730-1103	NUT,M18X1.25,NYLOC,SS	3	G	
	16	730-0656	CAP,50MM OD	2	60	730-1104	NUT,M10X1.5,NYLOC,SS	21		
	17	730-0679	STOPPER, OD 17MM, HGH 10.5MM	2	61	730-1109	SCREW,M10X1.5,80MM,BHC,HE,SS	3		
	18	730-0681	PLUG,KNEE PAD,90X51	2	62	730-1110	SCREW,M10X1.5,115mm,BHC,HE,SS	1		
F	19	730-0702	SHROUD,TOP,LP	2	63	730-1111	SCREW,M10X1.5,125MM,BHC,HE,SS	2	F	
	20	730-0704	CAP,OUTSIDE,GRIP,25MM,AL	2	64	730-1112	SCREW,M10X1.5,130MM,BHC,HE,SS	6		
	21	730-0721	ASSY, PULLEY 75MMx31.5 W/SPACERS	3	65	730-1118	SCREW,M10X1.5,30MM,BHC,HE,SS	3		
	22	730-0778	BELT,15.5FT LONG	1	66	730-1119	SCREW,M10X1.5,35MM,BHC,HE,SS	6		
E	23	730-0845	SPEED NUT,U-STYLE CLIP-ON NUT,M8	6	67	730-1122	SCREW,M10X1.5,63MM,BHC,HE,SS	6	E	
	24	730-0870	SCREW,M10X1.5,25MM,FHMS,HE,SS	8	68	730-1138	SCREW,M8X1.25,20MM,BHC,HE,SS	6		
	25	730-0877	RETAINING RING,25MM ID,32MM OD	1	69	730-1154	CAP,RECESS,FHM SCREW,42MM OD	1		
	26	730-0881	Bearing, 61905-2Z, Ø25mm X Ø42mm X 9mm	2	70	730-1155	SCREW,10-32X3.2,SET	6		
	27	730-0885	NUT,M6X1.0,JAM,HEX,SS	2	71	730-1335	SHROUD,LNL,S5100	1		
D	28	730-0890	SCREW,M8X1.25,25MM,SHCS,HE,SS	2	72	730-1399	WSA-LNL,180LB,15H	1	D	
	29	730-0891	SCREW,M8X1.25,30MM,SHCS,HE,SS	1	73	730-1448	STOP,BUMPER,WEIGHT PLATE, 25.4MM	2		
	30	730-0892	SCREW,M8X1.25,55MM,SHCS,HE,SS	1	74	730-1491	LABEL,INSTRUCTIONS,LOCK N LOAD	1		
	31	730-0896	SCREW,M8X1.25,16MM,SET,FPS,HE,SS	4	75	730-1538	KIT, REPLACEMENT, ADJ. LEG, LEG CURL	1		
	32	730-0899	Screw, M6x1.0, 12mm, PHM, PH, SS	2	76	730-7225-XXX	STICKER, PLACARD, INSTRUCTION, LLLP, NAUT.	1		
C	33	730-0907	WASHER,M10,SPLIT,LOCK	2	77	731-0335	STICKER, MADE IN CHINA, IP	1	C	
	34	730-0908	WASHER,PLAIN,M10,SS	50	78	731-7311	STICKER,NAUTILUS,DECO,45MMX191MM	2		
	35	730-0910	WASHER,PLAIN,M8,SS	8						
	36	730-0911	SPING,COMPRESSION ,ADJ,HDL	1						
B	37	730-0924	ASSY,BAR BALL END CAP, Ø30	1					B	
	38	730-0930	WELD,HANDLE,EXTENSION,ADJ	1						
	39	730-0935	GRIP,SQUARE,ADJ HANDLE	1						
	40	730-0936	ASSY,TUBE,INSERT,SLEEVE	2						
	41	730-1040	WEIGHT STACK,FRAME,IN-S1011	1						
A	42	730-1041	ASSY,MAIN FRAME	1					A	
	43	730-1042	CROSSBEAM,LOWER,FRAME	1						
	44	730-1043	CROSSBEAM,UPPER,FRAME	1						



CORE HEALTH & FITNESS, LLC

4400 NE 77th Ave., Suite 300
Vancouver, WA 98662

CORE PART NO	REV
NL-S1011-29AGS	A
TITLE	
NL,SSS,LEG CURL,SEATED,LNL	
SCALE: 1:14	SHEET 2 OF 3
SHEET SIZE: B	



CORE HEALTH & FITNESS, LLC		
4400 NE 77th Ave., Suite 300 Vancouver, WA 98662		
CORE PART NO	REV	
NL-S1011-29AGS	A	
TITLE		
NL,SSS,LEG CURL,SEATED,LNL		
SCALE: 1:14	SHEET 3 OF 3	SHEET SIZE: B